

ZIBENY

KEEP
INNOVATING

KEEP
INNOVATING

DC + AC Complete SERIES



For 600V 1000V Solar PV System
Over-load protection inside



The Best DC Components for The Best Result.

ABOUT ZJBENY

Top 1 manufacturer of DC components and combiner boxes in China. With more than 10 years experience in solar DC solutions designing, producing and testing.

We are one of the manufacturers own the DC electrical cycle tester in China, the test equipment is important for keeping the DC switch at high quality level.

The first DC switch listed by UL508i.

The standard DC isolator recommended by Clean Energy Council Australia.

ZJBENY is supplying reliable DC components to top inverter companies and EPCs worldwide.

1000V 1500V solar solutions DC side and AC side is available.



DC+AC for Solar 1 String



IP65 DC + AC box includes the DC and AC protection for solar PV system.
 Over-voltage and over-load protection for solar DC side.
 AC breaker and AC surge arrester at AC side.
 An isolating plastic plate between DC components and AC components ensure safety operating.



DC Breaker

- UL508i approval and design, IEC60947
- Over load protection
- Non-polarity for easier wiring

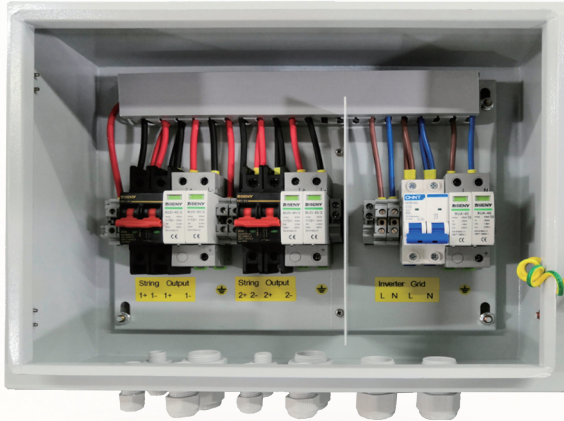
DC SPD

- New IEC 61643, UL1449
- Designed for solar PV protection
- Higher capacity In 20KA (IEC, UL)
- Response time <25ns

Specification		Enclosure	
Model Number	BHT-1/1	Material	Powder Coating Metal
Input	1 string	Degree of Protection	IP65
Output	1 string	Impacts	IK10
Max Voltage	600V	Dimensions (W*H*D)	300*300*150
Max Current Output	15A	Input Cable Glands	PG09, 2.5-16
	63A	Output Cable Gland	PG21, 2.5-16
AC Breaker	220V 20A-63A	Environment	
AC SPD	275V AC	Operating temperature	-25°C - +60°C



DC+AC for Solar 2 Strings



DC Breaker

- UL508i approval and design, IEC60947
- Over load protection
- Non-polarity for easier wiring

DC SPD

- New IEC 61643, UL1449
- Designed for solar PV protection
- Higher capacity In 20KA (IEC, UL)
- Response time <25ns

Specification		Enclosure		
Model Number	BHT-2/2		Material	Powder Coating Metal
Input	2 strings		Degree of Protection	IP65
Output	2 strings		Impacts	IK10
Max Voltage	600V	1000V	Dimensions (W*H*D)	400*300*150
Max Current Output	15A	15A	Input Cable Glands	PG09, 2.5-16
	63A	40A	Output Cable Gland	PG21, 2.5-16
AC Breaker	220V 20A-63A		Environment	
AC SPD	275V AC		Operating temperature	-25°C - +60°C



DC Breaker

- UL489B PV standard
- IEC60947-2
- Over-load and short circuit Protection
- Non Polarity

DC SPD

- New IEC 61643, UL1449
- Designed for solar PV protection
- Higher capacity In 20KA (IEC, UL)
- Response time <25ns

Specification			Enclosure	
Model Number	BHT-3/1		Material	Powder Coating Metal
Input	3 strings		Degree of Protection	IP65
Output	1 string		Impacts	IK10
Max Voltage	600V	1000V	Dimensions (W*H*D)	
Rated Current of DC Breaker	40A	40A	Input Cable Glands	PG09, 2.5-16
Max Current Output	63A	40A	Output Cable Gland	PG21, 2.5-16
AC Breaker	220V 20A-63A		Environment	
AC SPD	275V AC		Operating temperature	-25°C - +60°C



DC Breaker

- UL489B PV standard, IEC60947-2
- Over-load and short circuit Protection
- Non Polarity for easier wiring

DC SPD

- New IEC 61643, UL1449
- Designed for solar PV protection
- Higher capacity In 20KA (IEC, UL)
- Response time <25ns

Specification		Enclosure	
Model Number	BHT-4/1	Material	Powder Coating Metal
Input	4 strings	Degree of Protection	IP65
Output	1 string	Impacts	IK10
Max Voltage	1000V	Dimensions (W*H*D)	
Rated Current of DC Breaker	50A	Input Cable Glands	PG09, 2.5-16
Max Current Output	63A	Output Cable Gland	PG21, 2.5-16
AC Breaker	220V 20A-63A	Environment	
AC SPD	275V AC	Operating temperature	-25°C - +60°C



DC Breaker

- UL489B PV standard, IEC60947-2
- Over-load and short circuit Protection
- Non Polarity for easier wiring

DC SPD

- New IEC 61643, UL1449
- Designed for solar PV protection
- Higher capacity In 20KA (IEC, UL)
- Response time <25ns

Specification		Enclosure	
Model Number	BHT-4/2	Material	Powder Coating Metal
Input	4 strings	Degree of Protection	IP65
Output	2 strings	Impacts	IK10
Max Voltage	1000V	Dimensions (W*H*D)	
Rated Current of DC Breaker	50A	Input Cable Glands	PG09, 2.5-16
Max Current Output	63A	Output Cable Gland	PG21, 2.5-16
AC Breaker	220V 20A-63A	Environment	
AC SPD	275V AC	Operating temperature	-25°C - +60°C



6 input 2 output 1000VDC



DC Breaker

- UL489B PV standard, IEC60947-2
- Over-load and short circuit Protection
- Non Polarity
- Anti re-flux protection

DC SPD

- New IEC 61643, UL1449
- Designed for solar PV protection
- Higher capacity In 20KA (IEC, UL)
- Response time <25ns

Specification		Enclosure	
Model Number	BHT-6/2	Material	Powder Coating Metal
Input	6 strings	Degree of Protection	IP65
Output	2 strings	Impacts	IK10
Max Voltage	1000V	Dimensions (W*H*D)	
Rated Current of DC Breaker	40A/40A	40A/40A	Input Cable Glands
Max Current Output	63A/63A	40A/63A	Output Cable Gland
AC Breaker	380V 40A-63A		
AC SPD	275V AC		
		Environment	
		Operating temperature	-25°C - +60°C